

# Problems Using The Active X Control and Excel 17/05/2005

You have indicated that the USC701 can be programmed with the "USC Config 106" and COA703.

This would indicate that the various run time requirements to communicate with the USC701 can be installed on the PC you are using.

I have found one problem with the active x control insulation program in that it did not install all required run time libraries.

I have updated the install at [www.apcs.net.au/hlp/hlp1082/hlp1082.html](http://www.apcs.net.au/hlp/hlp1082/hlp1082.html). However This is not a problem if the active x control was installed on the same PC as "USC Config 106".

I do not know where the message "Comm Port 1 is off site" would come from, it is not part of the program but could be part of the run time library or the operating system. The only solution is a process of elimination.

## Things to Try 01

1. The COA703 is connected to a COM port on the PC. This is working as "USC Config 106" is communicating with the PC. On "USC Config 106" menu select "Tools">"Com Port Properties" to determine the COM port number being used.
2. Shut down "USC Config 106" and then start application containing active x control. Click the COM button and select the same port number as determined earlier.
3. Click the Open button on the active x control and observe operation.

## Things to Try 02

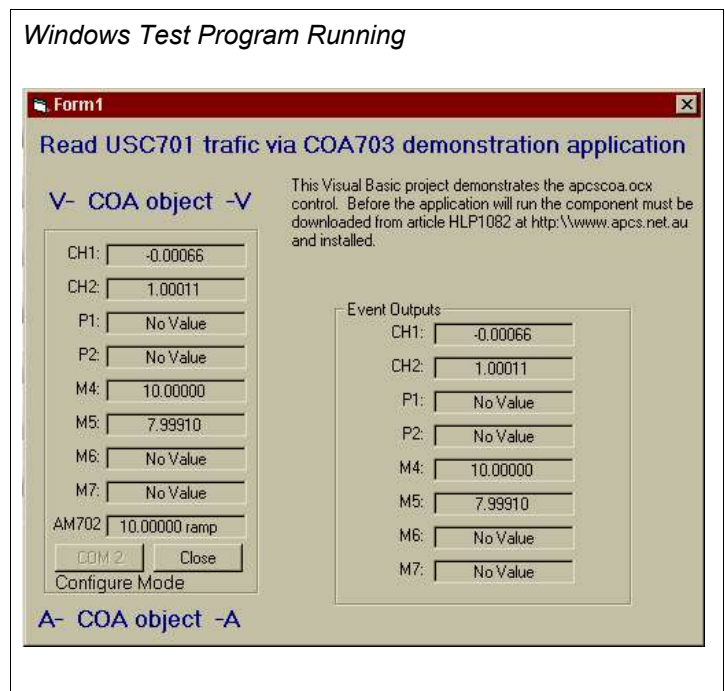
On the web site there are two downloads on the hlp1082 page

- [Free COA703 ActiveX Control](#) (updated 17/05/2005)
- [Windows test program with VB5 source code](#)

The first item I have updated due to the problem discussed above and will probably not help as the original program will work if "USC Config 106" is installed on the same PC.

The second item is a zip file "apcsocxtest.zip" that contains a compiled program (testcoa703.exe) used to demonstrate the active x control. Use winzip to extract the program to you're desktop and run it (active x control must first be installed).

If this program will not work then other Excel will not work.




## Things to Try 03

On professional versions of windows the applications should be installed while signed on as administrator.

## Things to Try 04

Test operation without adding any code.

1. Start Excel and open a new blank workbook.
2. Turn on the 'Control Toolbox' if not already displayed, ('View' > 'Toolbars' > 'Control Toolbox')
3. Click 'More Controls' (Hammer + Scanner icon)
4. Select 'APCS\_Read.COA'
5. Place object by dragging on screen over the area to display then adjust to required size.
6. On the control tool bar click the  design button up to return to run mode.
7. Connect COA703 to serial port and a operating USC701.
8. Open the com port readings should be displayed.

## Things to Try 05

Many computers do not have serial ports. If using a USB to serial port converter avoid disconnecting the COA703 from the top of the USC701 while the com port is open.

## Things to Tell Me

1. What version of Windows are you using?
2. What version of Excel are you using?
3. What happened when trying the process above?
4. At what time in each process does a problem occur?

Problems can be sent to [sales@apcs.net.au](mailto:sales@apcs.net.au)